



NORTHERN CALIFORNIA  
CONTEST CLUB

---

**Sweepstakes 2007:**

**SS Rules 101  
LCR Analysis**

# SS Rules 101 : Time

---

- CW: November 3-4, 2007
- SSB: November 17-18, 2007
- **Rule 2.3. Begins 2100 UTC Saturday, ends 0300 UTC Monday.**

The contest always starts at 1pm Pacific, right?

**WRONG!**

# SS Rules 101 : Time

---

- Energy Policy Act of 2005 : DST lasts one week longer than past years, starting in 2007
- Daylight Saving to Standard time conversion happens in the middle of SS CW.

**SS CW: 2pm PDT to 7pm PST**

**SS SSB: 1pm PST to 7pm PST**

- Know how your computer and logging program will behave!
- **Test it before SS CW to eliminate any surprises.**

# SS Rules 101 : Exchange and Categories

Exchange:

1	U	N6DE	90	SCV
<serial #>	<precedence>	<callsign>	<check>	<section>

↓

Q: Single Op  $\leq 5W$   
A: Single Op  $\leq 150W$   
B: Single Op  $> 150W$   
U: Single Op w/ packet  
M: Multi Op  
S: School

↓

Last two digits of  
the year you first  
got your ham license

**Know the  
exchange & fills!**

- Max of 24 hours for all categories with a given callsign.
- Off time must be in at least **30** minute increments.
- Multi Op: Unlimited band changes, can use packet spotting, at least 50% of operators in M/S must be NCCC members.

# SS Rules 101 : Stations and Multipliers

---

## Stations

- Rule 6.1. Work each station only once, regardless of the frequency band.

## Multipliers – Summary of Rules 5.2 section:

- 80 multipliers
- 71 ARRL Sections
  - KH6 and other US possessions in the Pacific count as the Pacific Section.
- 9 Canadian Mults

**Other DX does not count for QSO credit in Sweepstakes!**

- Just give DX stations 59 and move on.

# SS Rules 101 : 175 Mile Circle & HMO

---

## ARRL General Rules

### 175 mile radius club circle:

- 8.4.1.4. All stations must be located and all operators must reside within the designated club territory.

### HMO Rule #1

- 3.3. An operator may not use more than one call sign from any given location during the contest period.

### HMO Rule #2

- Summary of 3.5 : One callsign per transmitter, except for family stations.

# SS Rules 101 : Links to Rules

---

## Sweepstakes Rules:

<http://www.arrl.org/contests/rules/2007/novss.html>

## ARRL HF Contest Rules:

<http://www.arrl.org/contests/announcements/rules-hf.html>

## ARRL General Contest Rules:

<http://www.arrl.org/contests/announcements/rules-all.html>

# LCR Analysis : Why Should We Care?

---

LCR : Log Check Report

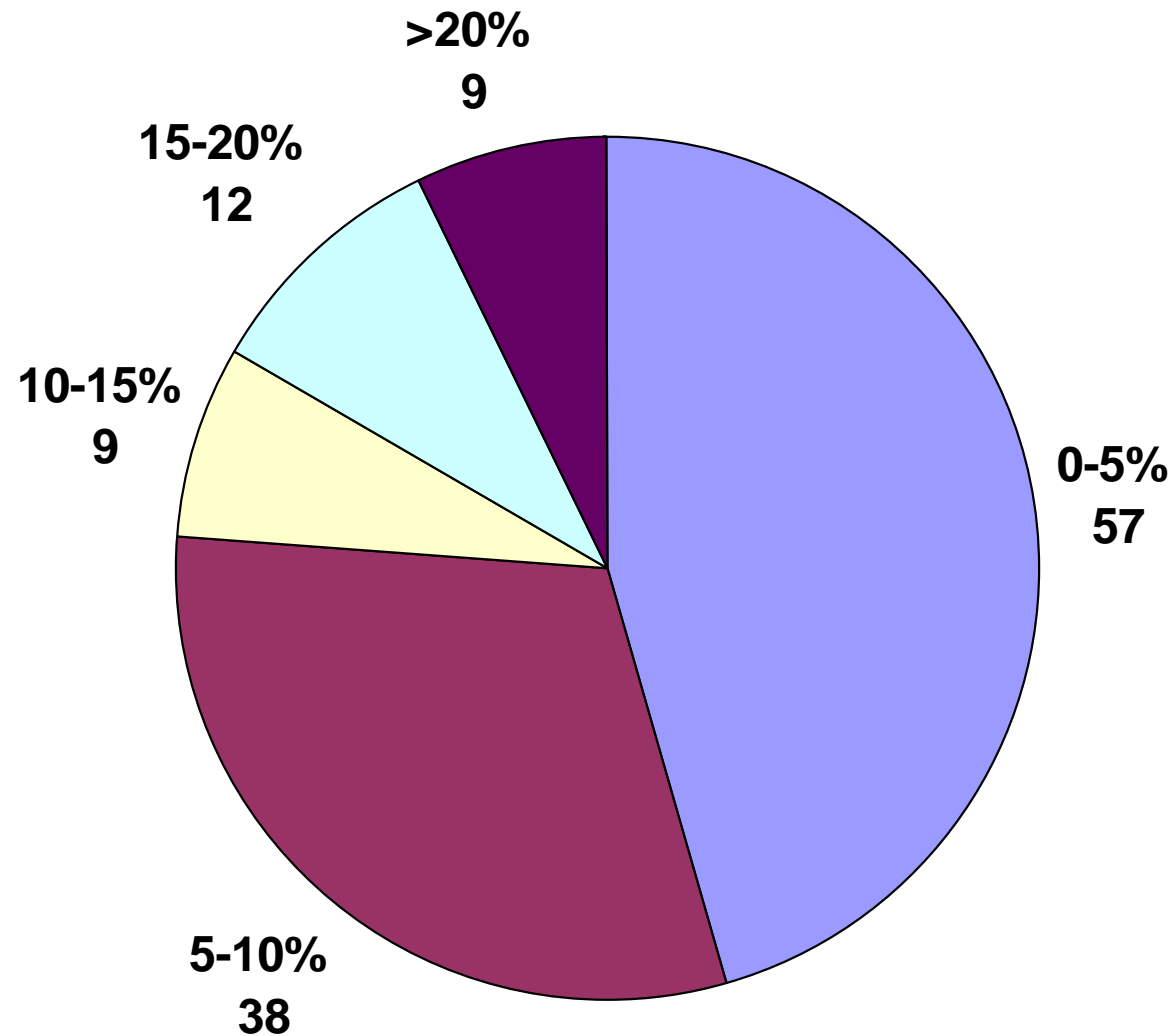
<http://www.arrl.org/members-only/contests/lcr.html>

Why care about logging accuracy?

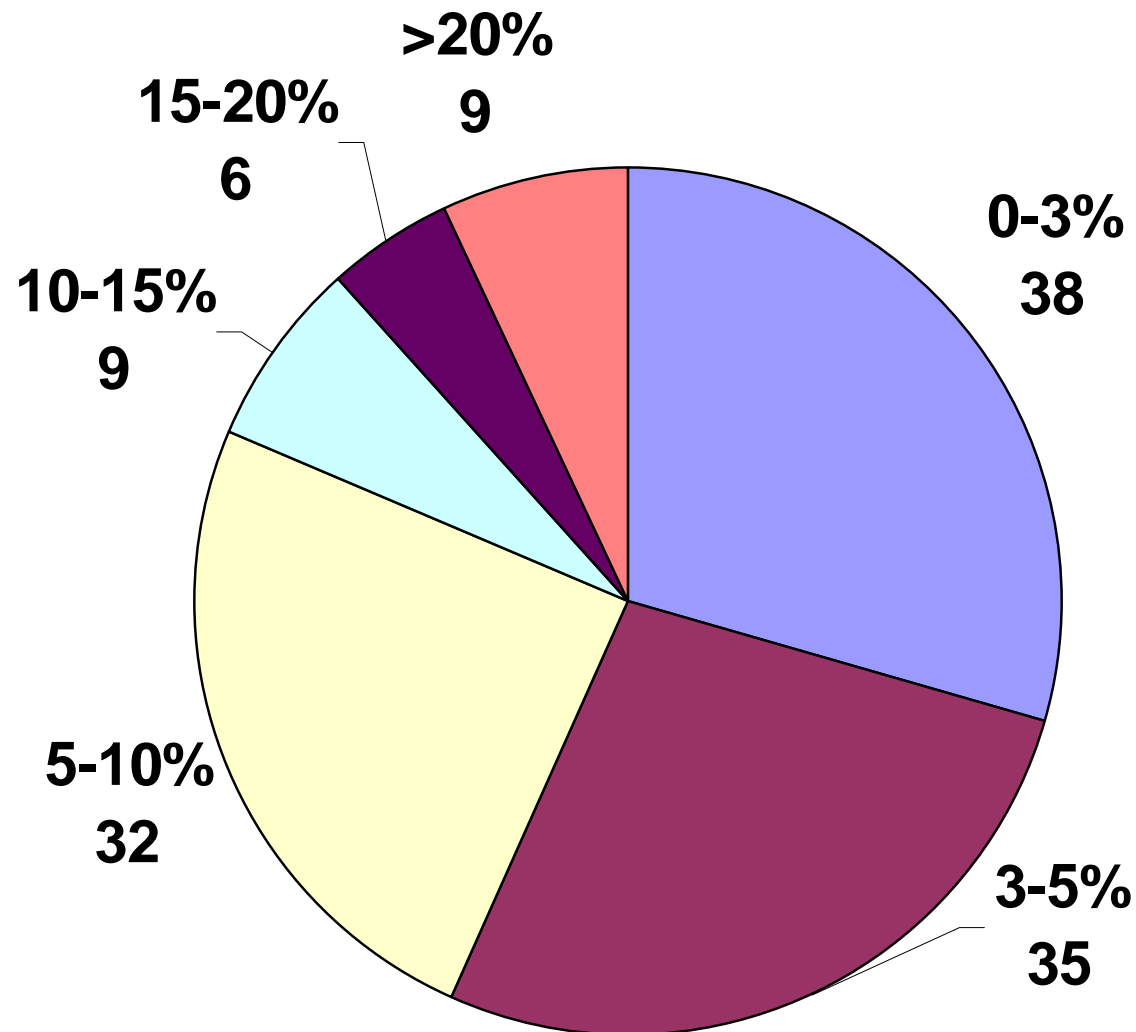
- NCCC goal:
  - “To help our members develop their operating and technical skills to become better contesters.”
- SS 2006 log check statistics
  - We lost 1.15M points in log checking.
  - 5.4% of our claimed score: 5.9% CW, 4.9% PH
  - Remember our margin of victory over PVRC?
  - Could determine the outcome of SS 2007.



# NCCC SS CW 2006: % of Points Lost



# NCCC SS SSB 2006: % of Points Lost



# LCR Analysis : Penalties

---

## QSO deleted for incorrect:

- Serial number
- Precedence
- Check
- Section

## QSO deleted + 1 additional QSO penalty:

- Busted Callsign
- NIL (not in log)

# LCR Analysis : LCR File

---

**Go to LCR file demo.**

# LCR Analysis : N6DE LCR Stats, SS 2006

Callsign	Day	Error Rate
SS CW @N6IJ	Saturday	1.5%
SS CW @W6CS	Sunday	4.0%
SS SSB @K6TD	Saturday	0.9%
SS SSB @ W6CS	Sunday	1.9%

# LCR Analysis : N6DE LCR Stats, SS 2006

	Call	NIL	Penalty QSOs	NR	PREC	CK	SEC	2+ Fields
CW	7	0	7	13	3	12	8	1
SSB	3	1	4	5	5	5	4	1
Total	10	1	11	18	8	17 (5 prefill)	12 (5 prefill)	2

# LCR Analysis : Questions

---

**LCR file tells us:**

- **How many errors?**
- **What errors?**
- **Who were the errors with?**

**It doesn't directly address:**

- **Where? (what band, what frequency)**
- **When in the contest?**
- **What was I doing at the time?**

**Find these answers with MS Excel analysis.  
Go to Excel demo.**